

QF-TEST

GUI Testing to the edge

**Quality is not a given...
... and testing is fun**

You...

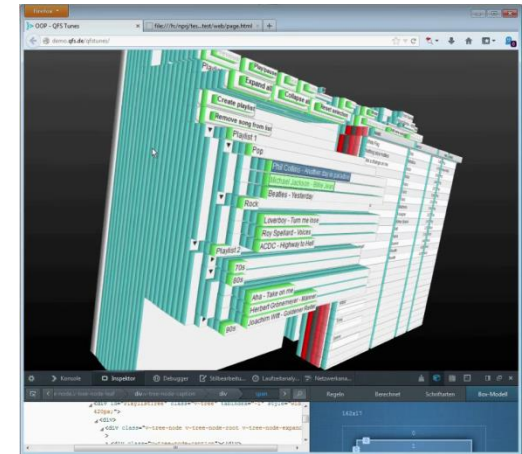
- develop / maintain complex GUI applications in Java Swing, SWT/RCP, FX and/or Web
- face the risk/costs of potential product errors
- don't feel safe with your current way of (manual) testing
- work in an agile process structure with increasing testing efforts from sprint to sprint

... and your goal is...

- provide your product in first quality
- find and fix errors at an early stage
- achieve extensive reusable tests and reproducible results
- get fast feedback in your sprint cycles
- be able to deliver at any time in ensured quality

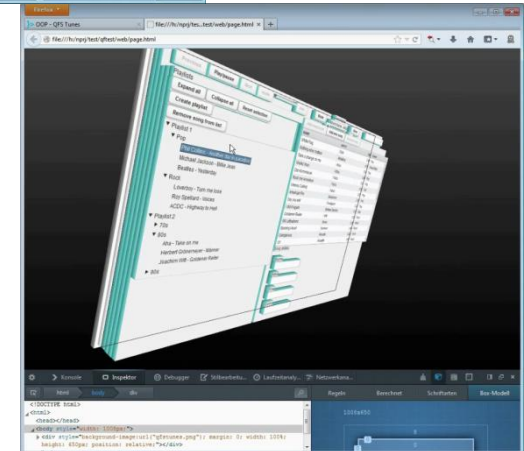
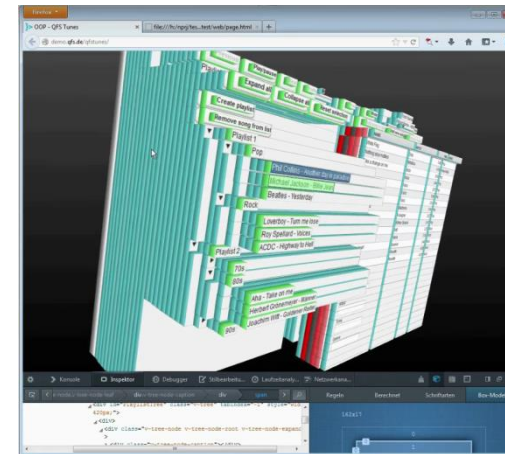
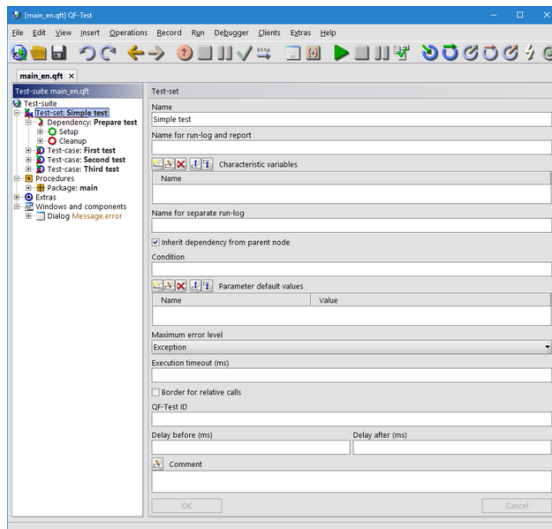
The GUI testing challenge

- Increasing complexity of GUI applications
- Stable component recognition within the product life cycle
- Support for different technologies and platforms
- Easy-to-use but efficient and flexible test creation
- Complex test setup and cleanup
- Integration into existing tool environment
- Combine technical and business testing



Highly specialized test tool

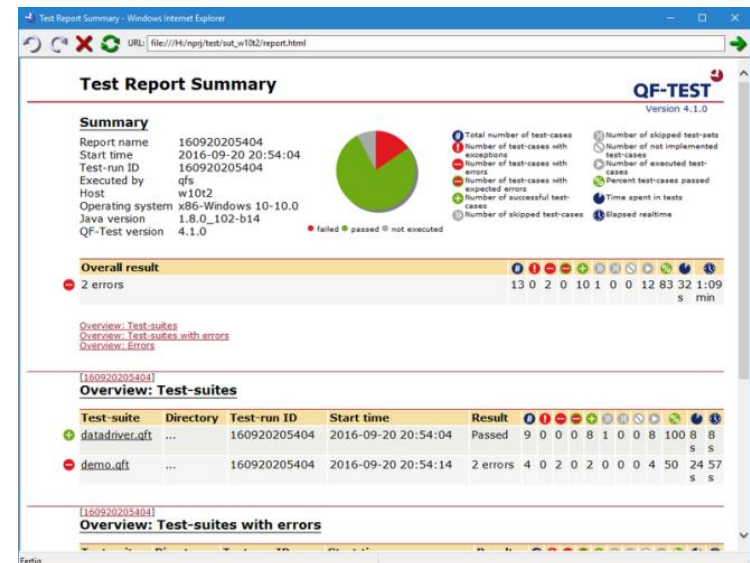
- Drastically reduced GUI complexity
- Fine-tuned deep inside component recognition
- Proven tolerant and stable test execution
- Cross platform, cross-browser, mixed technology testing
- Optimized easy-to-use tool handling
- ...



Java Swing  Eclipse/SWT JavaFX

Highly specialized test tool

- Intelligent „atomic“ test-case setup
- Detailed reporting and test-case documentation
- Intuitive test execution logging for rapid error analysis
- Open interfaces and plug-ins for existing tool environment
- Behavior-driven, keyword-driven and modular testing
- ...



Accepted by...

Testers

- Easy-to-use but efficient test creation
- Readable and maintainable tests
- Build up your quality base

Developers

- Secured functionality, no regression
- Error information on a silver plate
- Testers support is valued

Decision Makers

- Achievable prices , quick ROI
- Proven quality made and supported in Germany



Let's make them friends!



[Here](#) are the answers to the QF-Test FAQ.

QFS is perpetually developing:

2019/2020:

- **Windows based applications** (.Net, WinForms, WPF)
- **Mobile platforms** (Android, IOS)

