

QF-TEST

**The Tool for Professional
UI Test Automation**



**Test your Java, Web and Windows
applications with QF-Test!**

efficient and smart test case creation
over 1,400 customers worldwide
regression and load testing
for testers and developers
robust and reliable
cross-platform
cross-browser
easy to use

QF-Test Facts & Features

Professionality, efficiency & experience since 2001

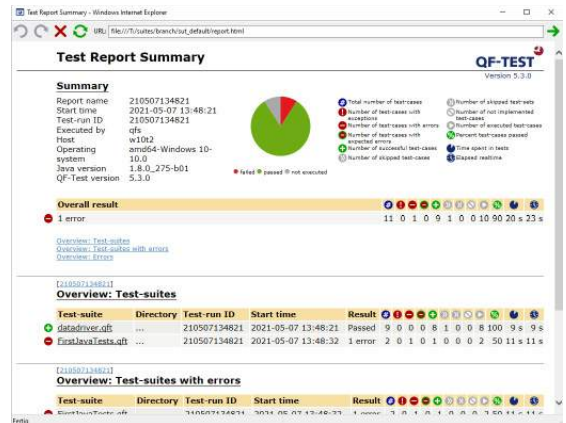
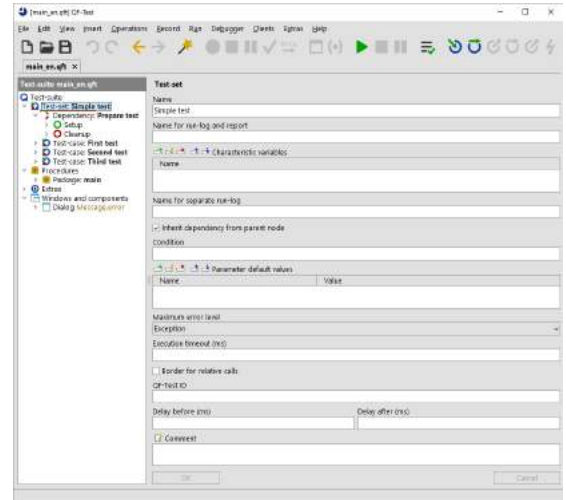
- Professional tool for automated testing of Java, Web and Windows applications with a graphical user interface (GUI)
- For (professional) testers and developers
- Modular, reusable tests in combination with user-friendly handling lead to a high return on investment (ROI)

Versatility & robustness

- Automated regression and load tests
- Reliable recognition even of complex and dynamic UI components
- **Cross-platform:** Tests on Windows, Linux and macOS
- **Cross-browser:** Google Chrome, Mozilla Firefox, Opera, Safari, Microsoft Edge (also Chromium based), Internet Explorer. Headless Browser versions of Chrome and Firefox.
- Mobile Emulation for Web applications.
- Testing of Electron applications
- Testing of PDF documents
- Configurable reports and test documentation
- intuitive usability

User-friendliness & strong service User-friendliness & strong service

- Extensive documentation (Manual, Tutorial, Blog, Standard library, Mailing list as forum) and Videos
- Quick and competent support from the QF-Test developers
- Free trial license for 4 weeks



Over more than 1,400 customers worldwide in more than 60 countries



Prices

QF-Test is currently available for five different GUI technologies (**Swing, JavaFX, SWT, Web and Windows**) which can be combined arbitrarily, e.g. QF-Test/swing+swt. You just buy, what your really need!

All licenses are **perpetual** and **"floating"** this means freely transferable within one local network unlike node locked licenses wich are tied to a single user. Besides **developer licenses** we offer price-reduced **runtime licenses**. Alternatively to purchasing we also offer **subscription licensing**. In addition, offer a license server for companies with multiple networks and/or locations. Discounted or charge-free license provision for **academic purposes** and **open-source** or **charity projects** is possible.

Developer licenses		Runtime licenses	
Buy			
	Price		Price
Developer license (permanent, floating) incl. 1 GUI-technology	2,095 €	Runtime license (permanent, floating) inkl. 1 GUI-Technologie	1,045 €
+ 1 further GUI technology	525 €	+ 1 further GUI technology	265 €
Maintenance incl. all upgrades + support	from 505 €	Maintenance incl. all upgrades + support	from 155 €
Subscription licensing for 1 year			
1 year	Price	1 year	Price
Developer license (floating) incl. 1 GUI-technology and maintenance	1,090 €	Runtime license (floating) incl. 1 GUI-technology and maintenance	470 €
+ 1 further GUI technology (incl. maintenance)	273 €	+ 1 further GUI technology (incl. maintenance)	119 €

For licenses with four UI technologies the fifth technology is free of charge.

Our **Software Maintenance Contract** on an annual basis. includes **email** and **telephone support** as well as **all kinds of upgrades**.

Additional information can be found at <https://www.qfs.de/en/product/pricing.html>. Please contact our sales team via +49 8171 38648-10 or sales@qfs.de for getting detailed price information or a formal quote for your required combination.

Training & Consulting

Consulting and **training** are available on request, either at your or our site or online as webinar

Training: <https://www.qfs.de/en/support/training-consulting/training.html>

Consulting: <https://www.qfs.de/en/support/training-consulting/consulting.html>

For further information or an individual offer please contact our sales team via +49 8171 38648-10 or sales@qfs.de.

Free special webinars: <https://www.qfs.de/en/support/training-consulting/webinars.html>



January 2022 Licensing, support, training and consulting for QF-Test are subject exclusively to our terms and conditions listed under <https://www.qfs.de/en/company/terms-conditions.html>

References

What our customers say

Simon, Shanghai, China

QF-Test is the high effective regression testing tool, reduce lots of man days and time on regression testing, which is very important for us to verify the product quality if time or QA resource are limited.

Glenn Chambers, Senior Quality Assurance Engineer, Rocket Software, Netherlands

For testing Java, Eclipse and WEB applications it's the best thing since sliced bread :)

Huawei Luo, TIBCO Software Inc., USA

QF-Test is the best GUI testing tool and has the best support team I ever saw.

Andreas Kellerstrass, Management Consulting, Adbubum AG, St. Gallen, Switzerland

By the way I don't know any other company with such a support for years. Even if you have more complex questions and wait sometimes a bit for an answer, they are always very detailed and exhaustive that nothing remains open. I wanted to express my excitement about this already for some time.

Heidi Klade, eMundo GmbH, Koppl near Salzburg, Austria

I could really learn a lot in this training. On the one hand trust in the tests that they cover a lot. Just today we could prevent the release with a big bug, because the tests detected it. The trust in the tests is growing in the company.

Denis Gauthier Software Integration, Thales Australia, Melbourne

Regarding the time saving aspect, it usually took me a full day to perform the Non-Regression Tests. It has now been reduced to three hours.

Some of our more than 1,400 customers worldwide



1 What is QF-Test?

QF-Test is a professional software tool for the creation, execution and management of automated system and load tests for Java, Web and Windows applications with a graphical user interface (GUI). QF-Test has been developed and distributed by Quality First Software GmbH (QFS) since 2001.

2 What GUI technologies are supported for testing?

- **Java:** For Java based applications the full toolkit set is covered starting with the traditional **Swing** (including Applets, Webstart, ULC, CaptainCasa), its successor **JavaFX** and also **SWT**, the Standard Widget Toolkit from Eclipse, including Plugins and RCP (Rich Client Platform) applications.
- Hybrid applications Java with Web (**embedded browser**): e.g. JxBrowser, SWT-Browser, JavaFX WebView components, Webswing, Jpro.
- **Web:** QF-Test provides cross-browser testing of **Web** GUIs including HTML5, AJAX, DOM and also **Electron** applications. QF-Test supports frameworks like Angular, React and Vue.js, but also toolkits as Smart (GWT), ExtJS, ICEfaces, jQuery UI, jQuery EasyUI, Kendo UI, PrimeFaces, Qooxdoo, RAP, RichFaces, Vaadin, ZK. Further toolkits can be integrated with little effort if required, e.g. SAP UI5, Siebel Open UI and Salesforce. The supported browsers are Google Chrome, Mozilla Firefox, Opera, Safari, Microsoft Edge (also Chromium based) and Internet Explorer as well as the headless browser versions of Chrome and Firefox.
- **Mobile web applications** are testable via the mobile emulation mode.
- **Windows Desktop applications:** Win32, .Net (often C#), Windows Forms, WPF, Windows Apps and C++ (often Qt)
- **PDF documents** can also be tested by QF-Test.

3 Which platforms is QF-Test available on? (www.qfs.de/en/systemrequirements)

- **Windows** (Windows 10, Windows 8.1, Windows 7, Server 2019, Server 2016, Server 2012 R2): You can test Java Swing, SWT, JavaFX, Web and native Windows applications with QF-Test.
- **Linux/Unix** (Solaris, AIX, HP-UX...): You can test Java Swing, SWT, JavaFX and Web applications with QF-Test.
- **macOS:** You can test Java Swing, JavaFX and Web applications with QF-Test.

4 Which Java versions does QF-Test support?

QF-Test supports Java versions 8 and newer for the SUT.

QF-Test itself is distributed with OpenJDK version 8 which is open source and does not incur any hidden costs for you.

When we bring QF-Test to Java 11 or higher we plan to either use OpenJDK or some other free JRE or acquire a Distribution License from Oracle so that there won't be any additional costs either.

5 How much does QF-Test cost?

The price for one development license starts at 2,095 EUR and for one runtime license at 1,045 EUR as well as the Software Maintenance Agreement (all upgrades and Product support) at 505 EUR. All licenses are »floating« and can be transferred freely within one local network. Subscription licensing (developer license from 1,090 EUR and runtime license from 470 EUR yearly) and a license server are also available.

6 Who is using QF-Test already?

Over 1,400 companies in more than 60 countries, ranging from small ones to global players, among them the ten largest IT services companies worldwide are using more than 8,500 licenses, for example HP, Océ, Philips, Software AG, Tibco, Zend (see »References«).

7 Is a demo version available for download?

Yes, you can request a free trial license for QF-Test with complete functionality on our homepage for four weeks. You can also download a free demo version anonymously, but the test-suites cannot be saved with this version. Both versions come with a tutorial for a quick start and the full documentation.

8 What are QF-Test's outstanding features?

- **Easy to use:** Quick creation of tests with capture and playback, excellent usability through QF-Test's intuitive GUI, simple composing of complex tests without the need for programming.
- **Highly flexible:** Automatic adaptation to changes in the application under test, intelligent recording and filtering, full access to recorded sequences, support for trees and tables, even with dynamic content.
- **Powerful:** Fine-tuned algorithms for component recognition, advanced programming elements (like loop constructs and logical 'if/else' control structures) as well as variables and procedures allowing modularization, text processing with regular expressions, full access to the Java API of the application under test, integrated scripting with Jython, Groovy and JavaScript, XML/HTML based test reporting incl. screenshots.
- **Well documented:** Extensive manual (user's guide with many examples and reference section), tutorial with many easy-to-understand test scenarios for a quick start, Blog, FAQ for basic questions, both English and German language support, example test-suites, Videos.

9 What is the advantage of automated system tests via the GUI?

The indispensable unit tests can only test small parts of an application in isolation. However, most problems arise during the interaction of these parts on system level. GUI based tests drive an application, just like a real user, to validate the system as a whole. In addition, even complex scenarios can be covered by GUI tests, which is not possible by means of unit or protocol based tests. Precondition for an effective realization of GUI tests is a suitable tool – like QF-Test. Intuitive usage, modular implementation, stable component recognition and low maintenance effort lead to a quick amortisation.

10 Can QF-Test be integrated with other tools?

QF-Test offers a flexible integration with other tools and areas due to XML as primary data format and different interfaces (batch execution via command line, daemon mode, scripting, REST, standard report):

- Continuous Integration and build tools e.g. Jenkins, GitLab CI/CD, Bamboo, Travis CI, Circle CI, TeamCity, Ant, Maven, CruiseControl
- Virtual desktops e.g. Citrix, VMware, VirtualBox
- Version control e.g. Git, SVN/Subversion, CVS, Mercurial
- Test management e.g. ALM/QualityCenter by MicroFocus/HP, TestBench by Imbus, QMetry, Klaros by Verit, TestLink, IBM Rational Quality Manager
- JIRA and JIRA PlugIns like TestRail, Zephyr, X-Ray, TM4J
- Keyword driven / behavior driven testing via our own approaches, Testmanagement tools, Excel, Cucumber
- Data driven Testing with Excel, CSV and all kind of data bases
- Error tracking e.g. Jira, MantisBT, Bugzilla
- Java in the browser: Webswing, JPro
- Load and performance tests via daemon mode or tools like NeoLoad

11 Where do I get help troubleshooting?

- Videos at <https://www.qfs.de/en/support/videos.html>. Subscribe for our YouTube Channel.
- Tutorial: A helpful guide for quick creation of first test-suites (Partly already on YouTube)
- Manual including technical FAQ
- Blog, Mailing-list including online archive
- Comprehensive web page full-text search also covering all sources above
- Free email support via support@qfs.de and phone +49 8171 38648-20 during evaluation
- Maintenance package including support and all kind of upgrades
- Individual support and training: at your site, at QFS or via webinar
- Starter webinars for beginners every Monday at 4 p.m. (CET/CEST), please register via email to service@qfs.de
- Special webinar free of charge once per quarter.