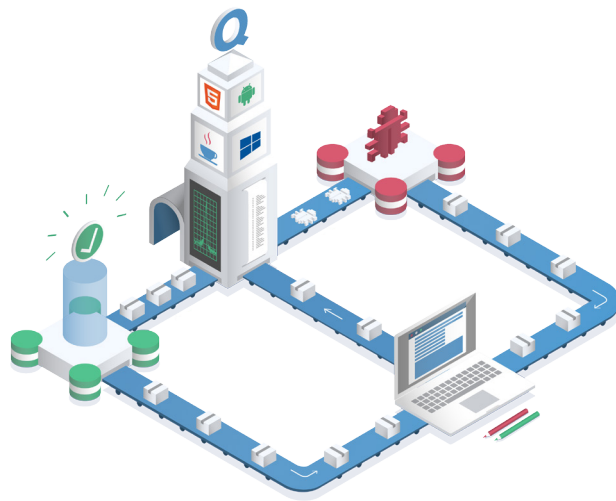


QF-TEST

**The Tool for Professional
UI Test Automation**



**Test your Java, Web, Windows & Android
applications with QF-Test!**

**efficient and smart test case creation
over 1,400 customers worldwide
regression and load testing
for testers and developers
robust and reliable
cross-platform
cross-browser
easy to use**

QF-Test Facts & Features

Professionality, efficiency & experience since 2001

- Professional tool for automated testing of Java, Web, Windows and Android applications with a graphical user interface (GUI)
- For (professional) testers and developers
- Modular, reusable tests in combination with user-friendly handling lead to a high return on investment (ROI)

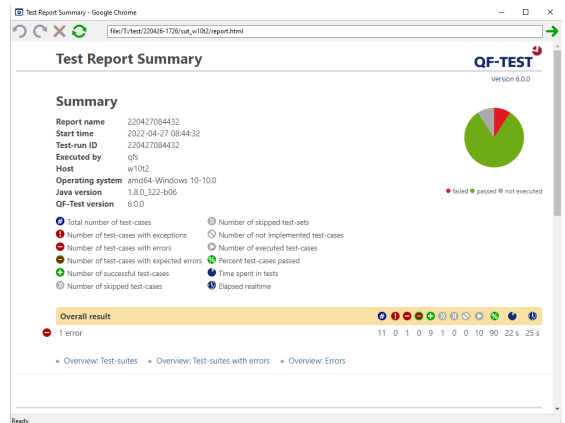
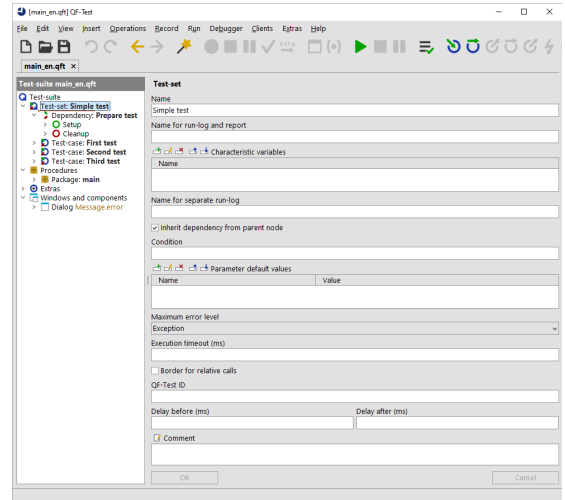
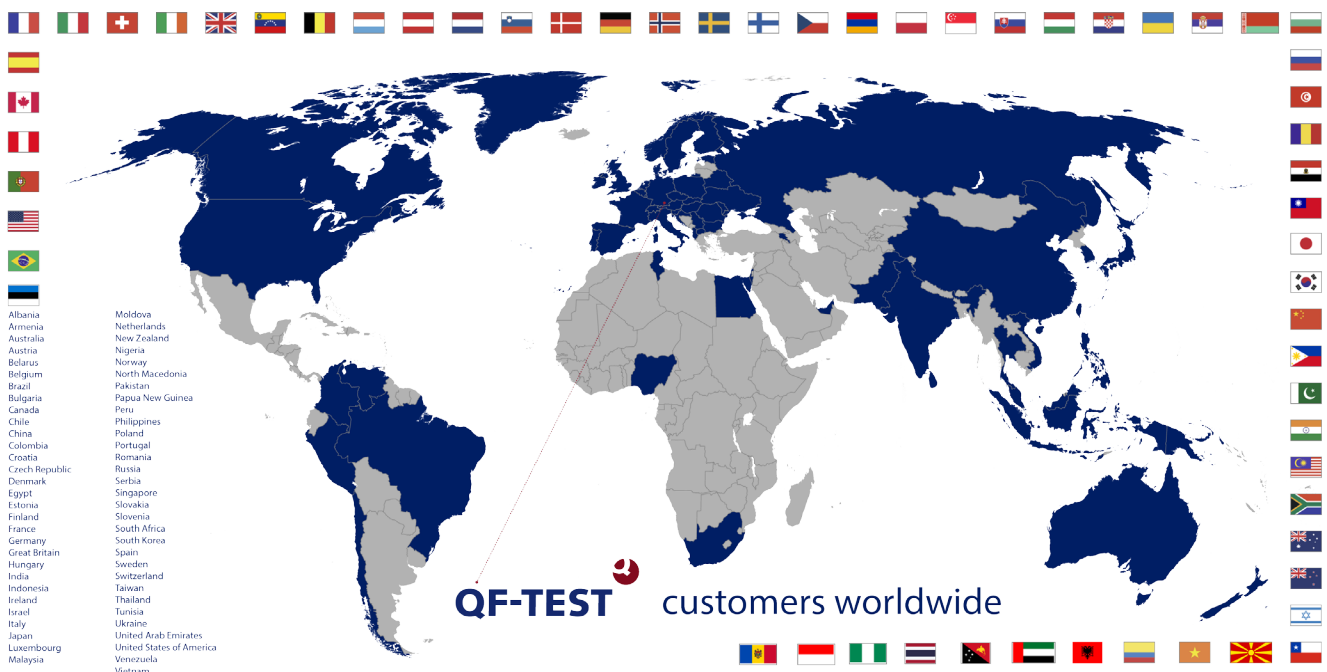
Versatility & robustness

- Automated regression and load tests
- Reliable recognition even of complex and dynamic UI components
- **Cross-platform:** Tests on Windows, Linux and macOS
- **Cross-browser:** Google Chrome, Mozilla Firefox, Opera, Safari, Microsoft Edge, Headless Browser versions of Chrome, Firefox and Edge.
- Mobile Emulation for Web applications
- Testing Android apps
- Testing of Electron applications
- Testing of PDF documents
- Configurable reports and test documentation
- Intuitive usability

User-friendliness & strong service

- Extensive documentation (Manual, Tutorial, Blog, Standard library) and Videos
- Quick and competent support from the QF-Test developers
- Free trial license for 4 weeks

Over more than 1,400 customers worldwide in more than 60 countries



Prices

QF-Test is currently available for the following GUI technologies (**Web, Java Swing, JavaFX, SWT, Windows & Android**) which can be combined arbitrarily, e.g. QF-Test/swing+swt+android.

You just buy what you really need!

All licenses are **perpetual** and **"floating"** this means freely transferable within one local network unlike node locked licenses which are tied to a single user.

Besides **developer licenses** we offer price-reduced **runtime licenses**. Alternatively to purchasing we also offer **subscription licensing**. In addition, offer a license server for companies with multiple networks and/or locations. Discounted or charge-free license provision for **academic purposes** and **open-source** or **charity projects** is possible.

Developer licenses		Runtime licenses	
Buy			
	Price*		Price*
Developer license (permanent, floating) incl. 1 GUI-technology	2,375 €	Runtime license (permanent, floating) incl. 1 GUI-Technologie	1,190 €
+ 1 further GUI technology	595 €	+ 1 further GUI technology	295 €
Maintenance incl. all upgrades + support	from 570 €	Maintenance incl. all upgrades + support	from 180 €
Subscription licensing for 1 year			
1 year	Price*	1 year	Price*
Developer license (floating) incl. 1 GUI-technology and maintenance	1,238 €	Runtime license (floating) incl. 1 GUI-technology and maintenance	537 €
+ 1 further GUI technology (incl. maintenance)	308 €	+ 1 further GUI technology (incl. maintenance)	133 €

All further UI technologies from the 4th on are free of charge.

Our **Software Maintenance Contract** on an annual basis includes **email** and **telephone support** as well as **all kinds of upgrades**.

* Prices of Nov. 2023; current prices and additional information can be found at:
<https://www.qfs.de/en/product/pricing.html>.

Please contact our sales team via +49 8171 38648-10 or sales@qfs.de for getting detailed price information or a formal quote.

Training & Consulting

Consulting and **training** are available on request, either at your or our site or online as webinar
Training: <https://www.qfs.de/en/support/training-consulting/training.html>

For further information or an individual offer please contact our sales team via +49 8171 38648-10 or sales@qfs.de.

Free special webinars: <https://www.qfs.de/en/support/training-consulting/webinars.html>



Nov 2023 Licensing, support, training and consulting for QF-Test are subject exclusively to our terms and conditions listed under <https://www.qfs.de/en/company/terms-conditions.html>

References

What our customers say

Simon, Shanghai, China

QF-Test is the high effective regression testing tool, reduce lots of man days and time on regression testing, which is very important for us to verify the product quality if time or QA resource are limited.

Glenn Chambers, Senior Quality Assurance Engineer, Rocket Software, Netherlands

For testing Java, Eclipse and WEB applications it's the best thing since sliced bread :)

Huawei Luo, TIBCO Software Inc., USA

QF-Test is the best GUI testing tool and has the best support team I ever saw.

Andreas Kellerstrass, Management Consulting, Adbubum AG, St. Gallen, Switzerland

By the way I don't know any other company with such a support for years. Even if you have more complex questions and wait sometimes a bit for an answer, they are always very detailed and exhaustive that nothing remains open. I wanted to express my excitement about this already for some time.

Heidi Klade, eMundo GmbH, Koppl near Salzburg, Austria

I could really learn a lot in this training. On the one hand trust in the tests that they cover a lot. Just today we could prevent the release with a big bug, because the tests detected it. The trust in the tests is growing in the company.

Denis Gauthier Software Integration, Thales Australia, Melbourne

Regarding the time saving aspect, it usually took me a full day to perform the Non-Regression Tests. It has now been reduced to three hours.

Some of our more than 1,400 customers worldwide















1 What is QF-Test?

QF-Test is a software for creating, executing and managing automated GUI tests for Web, Java, Windows and Android applications. QF-Test has been developed and distributed by Quality First Software GmbH (QFS) since 2001.

2 What GUI technologies are supported for testing?

- **Java applications:** For Java based applications the full toolkit set is covered starting with the traditional **Swing** (including ULC, CaptainCasa, JIDE Common Layer), its successor **JavaFX** and also **SWT**, the Standard Widget Toolkit from Eclipse, including Plugins and RCP (Rich Client Platform) applications.
- **Hybrid applications:** Java with Web (**embedded browser**): e.g. JxBrowser, SWT-Browser, JavaFX WebView components, Webswing, Jpro.
- **Web applications:** QF-Test provides cross-browser testing of **Web** GUIs including HTML5, AJAX, DOM and also **Electron applications:** QF-Test supports frameworks like Angular, React and Vue.js, but also toolkits as Smart (GWT), ExtJS, ICEfaces, jQuery UI, jQuery EasyUI, Kendo UI, PrimeFaces, Qooxdoo, RAP, RichFaces, Vaadin, ZK. Further toolkits can be integrated with little effort if required, e.g. SAP UI5, Siebel Open UI and Salesforce. The supported browsers are Google Chrome, Mozilla Firefox, Microsoft Edge, Opera and Safari as well as the headless browser versions of Chrome, Firefox and Edge.
- **Mobile web applications** are testable via the mobile emulation mode.
- **Android applications** from Android 7 with real devices and the Emulator from Android Studio
- **Windows Desktop applications:** Win32, .Net (often C#), Windows Forms, WPF, Windows Apps and C++ (often Qt)
- **PDF documents** can also be tested by QF-Test.

3 Which platforms is QF-Test available on? (www.qfs.de/en/systemrequirements)

- **Windows** (Windows 11, Windows 10, Server 2022, Server 2019, Server 2016, Server 2012 R2): You can test Java Swing, SWT, JavaFX, Web, Android and native Windows applications with QF-Test.
- **Linux/Unix** (Solaris, AIX, HP-UX...): You can test Java Swing, SWT, JavaFX, Android and Web applications with QF-Test.
- **macOS:** You can test Java Swing, JavaFX, Android and Web applications with QF-Test.

4 Which Java versions are supported by QF-Test?

QF-Test itself is distributed with Java version 17, which is Open Source and does not incur any hidden costs. For your own applications you can use any Java version 8 or higher.

5 How much does QF-Test cost?

The price for one development license starts at 2,375 EUR and for one runtime license at 1,190 EUR as well as the Software Maintenance Agreement (all upgrades and Product support) at 570 EUR. All licenses are »floating« and can be transferred freely within one local network. Subscription licensing (developer license from 1,238 EUR and runtime license from 537 EUR yearly) and a license server are also available.

(Prices of Nov. 2023; current prices available at <https://www.qfs.de/en/product/pricing.html>)

6 Who is using QF-Test already?

Over 1,400 companies in more than 60 countries, ranging from small ones to global players, among them the ten largest IT services companies worldwide are using more than 8,500 licenses, for example HP, Océ, Philips, Software AG, Tibco, Zend (see »References«).

7 Is a demo version available for download?

Yes, you can request a free trial license for QF-Test with complete functionality on our homepage for four weeks. You can also download a free demo version anonymously, but the test-suites cannot be saved with this version.

Both versions come with a tutorial for a quick start and the full documentation.

8 What are QF-Test's outstanding features?

- **Easy to use:** Quick creation of tests with capture and playback, excellent usability through QF-Test's intuitive GUI, simple composing of complex tests without the need for programming.
- **Highly flexible:** Automatic adaptation to changes in the application under test, intelligent recording and filtering, full access to recorded sequences, support for trees and tables, even with dynamic content.
- **Powerful:** Fine-tuned algorithms for component recognition, advanced programming elements (like loop constructs and logical ,if/else' control structures) as well as variables and procedures allowing modularization, text processing with regular expressions, full access to the Java API of the application under test, integrated scripting with Jython, Groovy and JavaScript, XML/HTML based test reporting incl. screenshots.
- **Well documented:** Extensive manual (user's guide with many examples and reference section), tutorial with many easy-to-understand test scenarios for a quick start, Blog, FAQ for basic questions, both English and German language support, example test-suites, Videos.

9 What is the advantage of automated system tests via the GUI?

The indispensable unit tests can only test small parts of an application in isolation. However, most problems arise during the interaction of these parts on system level. GUI based tests drive an application, just like a real user, to validate the system as a whole. In addition, even complex scenarios can be covered by GUI tests, which is not possible by means of unit or protocol based tests. Precondition for an effective realization of GUI tests is a suitable tool – like QF-Test. Intuitive usage, modular implementation, stable component recognition and low maintenance effort lead to a quick amortisation.

10 Can QF-Test be integrated with other tools?

QF-Test offers a flexible integration with other tools and areas due to XML as primary data format and different interfaces (batch execution via command line, daemon mode, scripting, REST, standard report):

- Continuous Integration and build tools e.g. Jenkins, GitLab CI/CD, Bamboo, Travis CI, Circle CI, TeamCity, Ant, Maven, CruiseControl
- Virtual desktops e.g. Citrix, VMware, VirtualBox
- Testing in Docker Containers using a provided Docker image
- Version control e.g. Git, SVN/Subversion, CVS, Mercurial
- Test management e.g. ALM/QualityCenter by MicroFocus/HP, TestBench by Imbus, QMetry, Klaros by Verit, TestLink, IBM Rational Quality Manager
- JIRA and JIRA Plugins like TestRail, Zephyr, X-Ray, TM4J
- Keyword driven / behavior driven testing via our own approaches, Testmanagement tools, Excel, Cucumber
- Data driven Testing with Excel, CSV and all kind of data bases
- Error tracking e.g. Jira, MantisBT, Bugzilla
- Java in the browser: Webswing, JPro
- Load and performance tests via daemon mode or tools like NeoLoad
- Connection to the Robot Framework: Robot Framework keywords can be simply implemented and executed as QF-Test procedures

11 Where do I get help troubleshooting?

- Videos at <https://www.qfs.de/en/support/videos.html>. Subscribe to our YouTube Channel
- Tutorial: A helpful guide for quick creation of first test-suites (recorded on YouTube)
- Manual including technical FAQ
- Blog, Mailing-list archive
- Comprehensive web page full-text search also covering all sources above
- Free email support via support@qfs.de and phone +49 8171 38648-20 during evaluation
- Maintenance package including support and all kind of upgrades
- Individual support and training: at your site, at QFS or via webinar
- Special webinar free of charge once per quarter